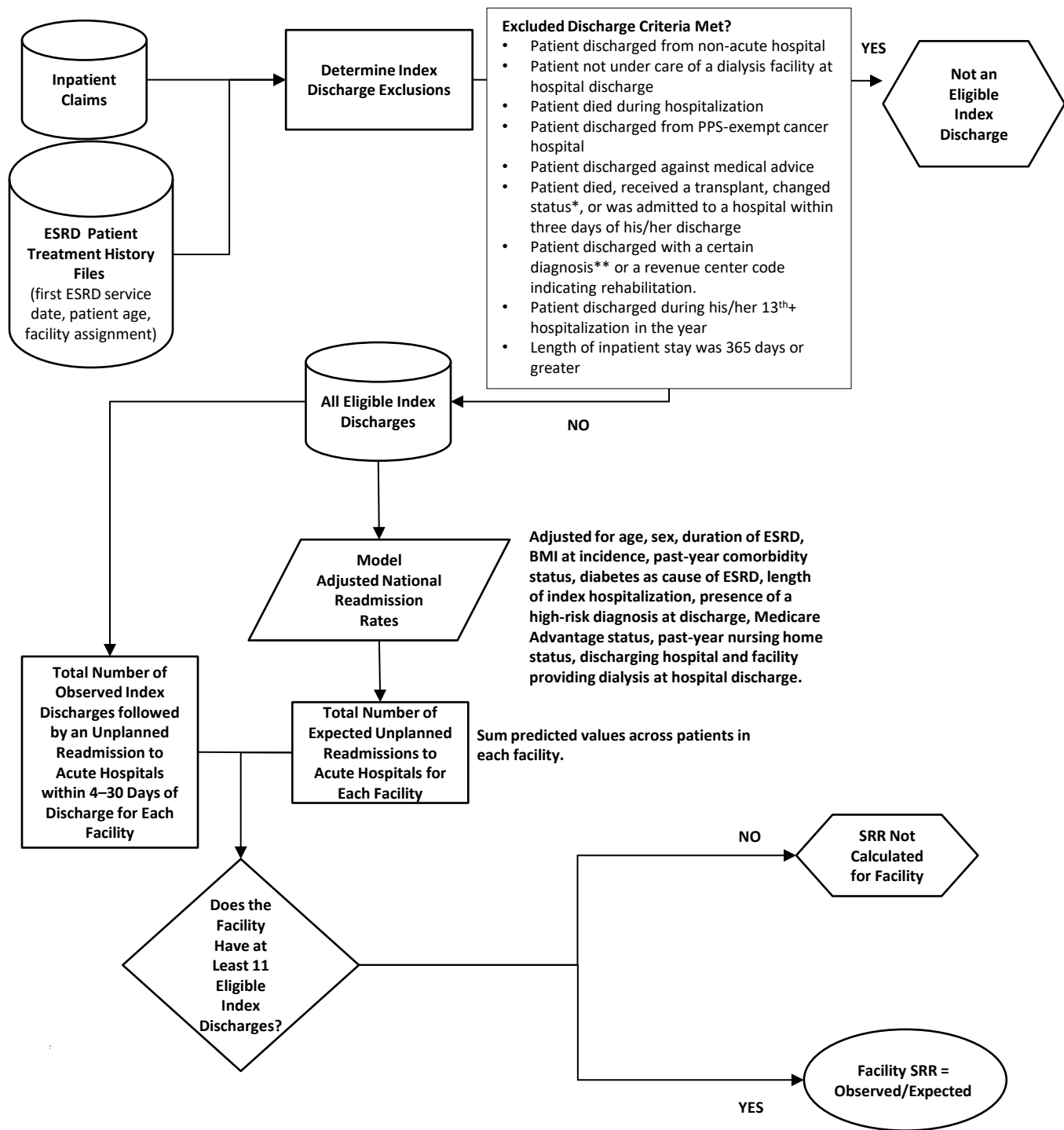


1.18a: Measure Calculation Flowchart

CBE ID: 5110, Standardized Readmission Ratio: The ratio of observed to expected hospital readmissions

Numerator Statement: Number of hospital readmissions observed

Denominator Statement: Number of hospital readmissions expected based on the national rate for patients with similar characteristics



*A patient changed status if they recovered, discontinued dialysis, or were lost to follow-up

**Certain cancers, mental health conditions or rehabilitation for prosthesis

***Multiple data sources include CMS EQRS patient-specific clinical and administrative data, the CMS Annual Facility Survey (Form CMS-2744), Medicare dialysis and hospital payment records, the CMS Medical Evidence Form (Form CMS-2728), transplant data from the Organ Procurement and Transplant Network (OPTN), the Death Notification Form (Form CMS-2746, and the Social Security Death Master File.